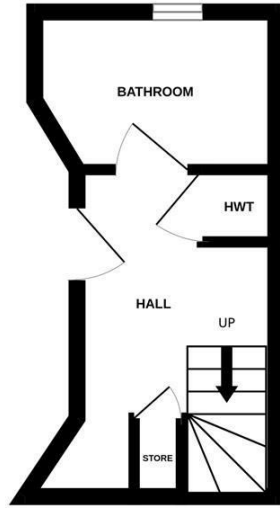
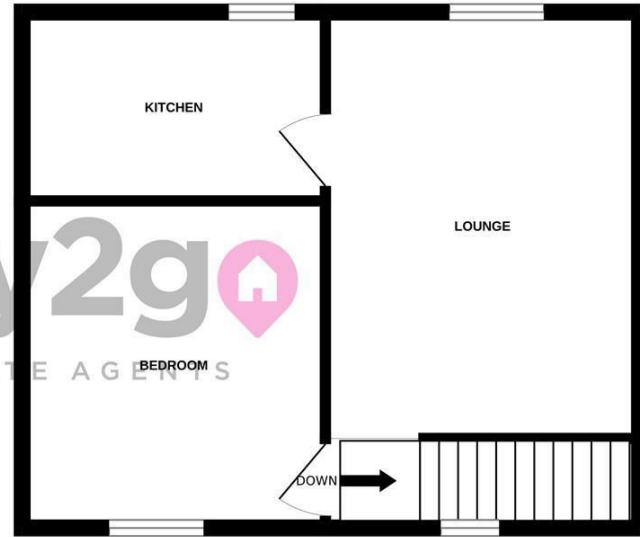


Floorplan

GROUND FLOOR
125 sq.ft. (11.7 sq.m.) approx.



1ST FLOOR
386 sq.ft. (35.8 sq.m.) approx.



key2go
ESTATE AGENTS

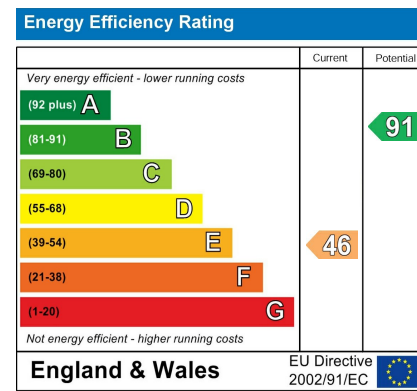
TOTAL FLOOR AREA: 511 sq.ft. (47.5 sq.m.) approx.

Whilst every attempt has been made to ensure the accuracy of the floorplan contained here, measurements of doors, windows, rooms and any other items are approximate and no responsibility is taken for any error, omission or mis-statement. This plan is for illustrative purposes only and should be used as such by any prospective purchaser. The services, systems and appliances shown have not been tested and no guarantee as to their operability or efficiency can be given.
Made with Metropix ©2023

Area Map



Energy Efficiency Graph



Viewing

Please contact our Lettings Team Office on 0114 2478819 if you wish to arrange a viewing appointment for this property or require further information.

These particulars, whilst believed to be accurate are set out as a general outline only for guidance and do not constitute any part of an offer or contract. Intending purchasers should not rely on them as statements of representation of fact, but must satisfy themselves by inspection or otherwise as to their accuracy. No person in this firm's employment has the authority to make or give any representation or warranty in respect of the property.

38a High Street, Mosborough, Sheffield, S20 5AE
Tel: 0114 2478819 Email: lettings@key2go.co.uk <https://www.key2go.co.uk>

key2go

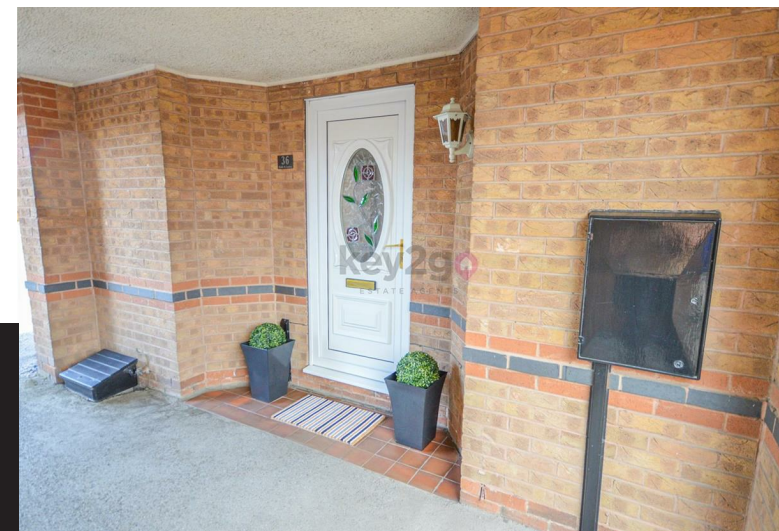


ESTATE AGENTS



36 Middle Ox Gardens
Halfway, Sheffield, S20 4SR

£675 PCM



36 Middle Ox Gardens

Halfway, Sheffield, S20 4SR

£675 PCM



A fantastic opportunity to rent this deceptively spacious, ready to move into one bedroom townhouse with allocated parking. This property is situated on a quiet courtyard close to great local amenities and transport links.

